

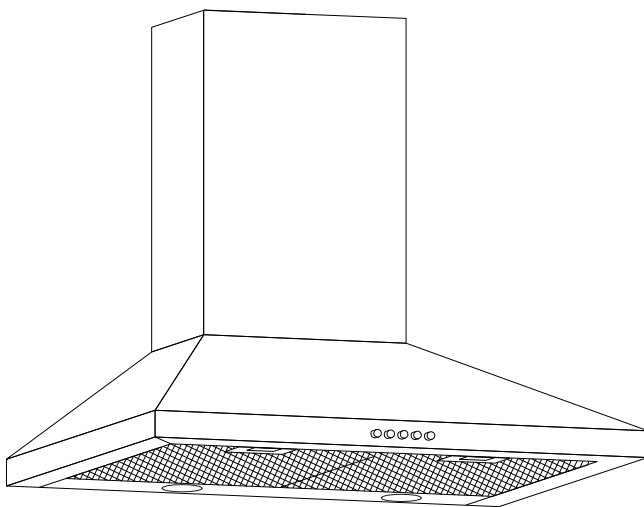


Since 1958

600mm / 900mm

**Chimney
Cooker Hood
Instruction Manual**

U600SC / U900SC



Introduction

Dear Customer

Thank you for choosing this quality, Univa Chimney Cooker Hood.

This User Manual contains important safety information and instructions on the operation and maintenance of your appliance.

Please take the time to read this User Manual before using your appliance and keep this book for future reference.

ALL SPECIFICATIONS ARE SUBJECT TO CHANGE WITHOUT PRIOR NOTICE

IMPORTANT!

Keep this Instruction Manual safe for future reference

CONTENTS

➤ SAFETY WARNINGS.....	3
➤ UNPACKING.....	5
➤ INSTALLATION.....	6
➤ OPERATION.....	9
➤ CLEANING & MAINTENANCE.....	10
➤ WARRANTY.....	11

SAFETY AND WARNINGS

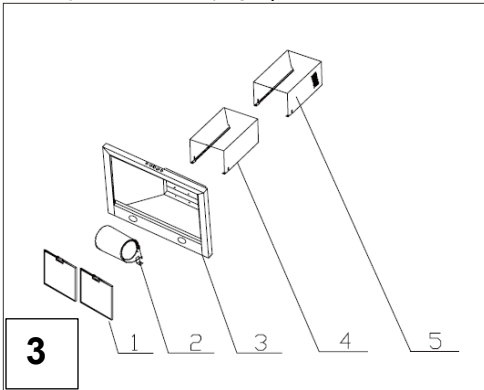
To reduce the risk of fire, electric shock or injury when using your appliance, follow basic precautions, including the following:

1. Intended for indoor and domestic use only!
2. Adequate ventilation of the room is required when the cooker hood is used at the same time as appliances burning gas or other fuels.
3. **WARNING!** Refer to the instruction sheet for operating the appliance when air is discharged from the room
4. Regulations regarding the discharge of air must be adhered to.
5. Do not check the status of the filters while the cooker hood is in operation.
6. To avoid injury, do not touch the light bulb within half an hour after use.
7. Do not flambe under the cooker hood.
8. Avoid opening the gasometer when there is no pan on the stove as this will damage the filters and is also a fire hazard.
9. Hot oil is a fire hazard! Constant supervision is required when frying food.
10. Disconnect the electrical plug prior to cleaning, maintenance, or repairs.
11. The cooker hood must be installed above a hob with no more than four plates or burners
12. When the range hood and other appliances supplied by energy, other than electricity, are in operation simultaneously, the negative pressure in the room must not exceed 4 Pa (4×10^{-5} bar)
13. This appliance can be operated by anyone older than 8 years of age, except persons with reduced physical, mental capabilities, or lack of experience and knowledge who may operate this appliance under supervision and/or have been given instructions concerning the safe operation of this appliance and the potential hazards that may arise from improper use.
Children must not play with the appliance. Cleaning and user maintenance must not be carried out by children unless they are older than 8 years of age and under adult supervision. Children younger than 8 years of age must be kept away unless continuously supervised.

14. WARNING: The appliance must be switched off before replacing the lamp to avoid the possibility of electric shock.
15. WARNING: Do not allow anyone other than qualified service personnel to carry out maintenance or repairs as this will void the warranty.
16. WARNING: Fire Risk if cleaning instructions are not followed as stipulated in the manual.
17. WARNING: To avoid the risk of electrical hazards, install the screws or fixing device as per the instructions set out in this manual.
18. To avoid damaging the connecting wires, only use the screws supplied with the unit and the pre-drilled holes to install.
19. The installation height of the hood must NOT be less than 65cm.
20. WARNING: Fire Hazard! Clean the filter screen regularly
21. Damaged supply cords must be replaced by the manufacturer, approved service agents or a qualified electrician.

UNPACKING

Know your product (Fig.3)



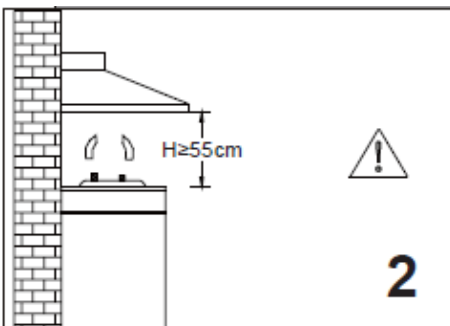
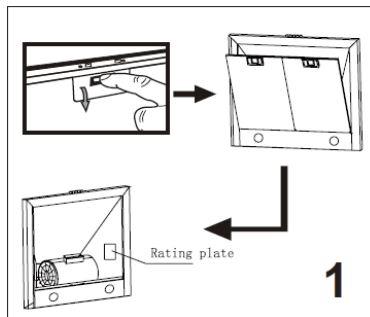
1. Filter assembly
2. Air duct assembly
3. Main body assembly
4. Outside chimney
5. Inner chimney

Also included:

- Damper flap
- Chimney fixed bolster
- Drill hole stencil

Important!

Check voltage and frequency on the rating plate located on the inside of the hood (Fig.1)



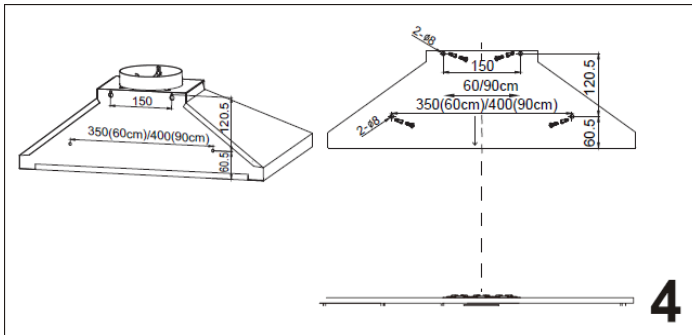
It is recommended that after installation, the bottom of the hood should be no less than 550mm and no more than 650mm above the stove's heating elements or burners (Fig.2)

INSTALLATION

Mounting the extractor

Important!

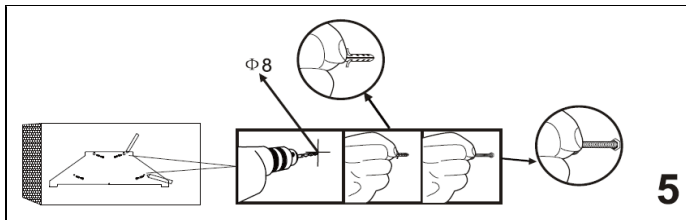
When cutting or drilling into the wall or ceiling, do not damage electrical wiring or other hidden utilities.



Define the installation location on the wall in accordance with Fig.4

Drill four $\varnothing 8$ holes on the wall

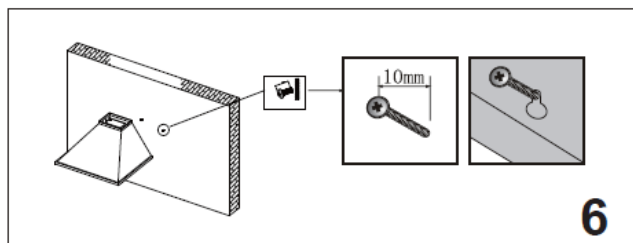
Fix four sets of expanding plugs and screws aiming to the four $\varnothing 8$ holes (Fig.5)



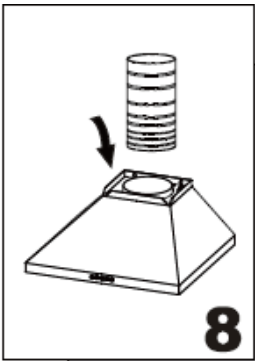
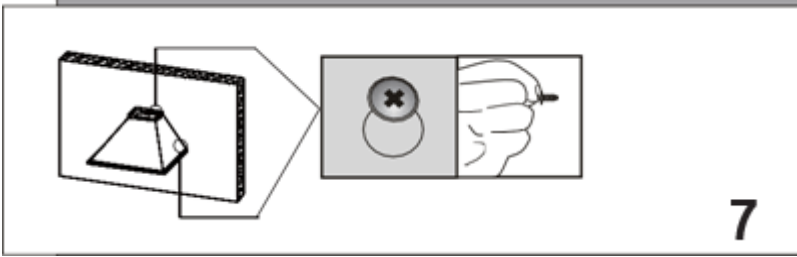
Important!

Ensure the outside dimension of the screws is 10mm

Hang the hood and let the 4 installation holes aim at the 4 screws, adjust it to setting position



Screw down the four screws, start with the upper 2 screws followed by the remaining 2 screws



Connect the hose with the air duct (Fig.8)

The cooker hood is fully convertible for different ventilation direction.

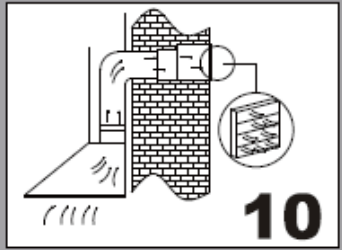
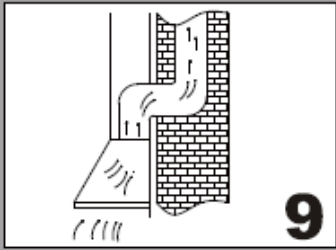
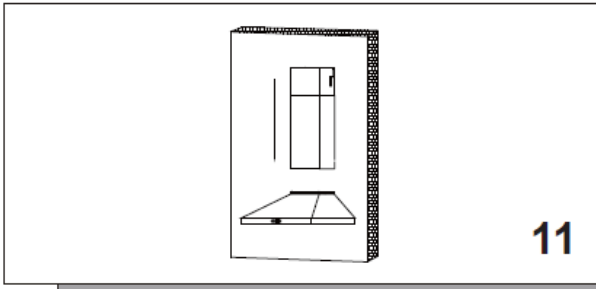


Diagram 9 shows a cross-section of a wall with a brick pattern. A duct runs vertically from a hood below, through the wall, and out through a roof cap. The number 9 is in the bottom right corner.

Diagram 10 shows a cross-section of a wall with a brick pattern. A duct runs horizontally from a hood below, through the wall, and out through a wall cap. A circular inset shows a detail of the wall cap. The number 10 is in the bottom right corner.

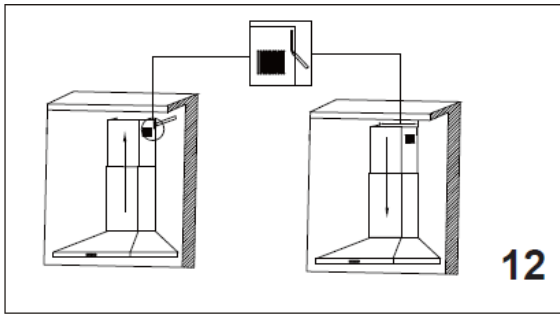
Vertical is the most common (Fig.9).
If the kitchen has an attic space above, the ducting may be run up through the cupboard and attic to a roof cap.

Horizontal (Fig.10)
If the kitchen has a socket above the cupboards, run the duct up into the socket and then discharge horizontally through the outside wall to a wall cap.



Position the outer chimney on the windowsill (Fig.11), attach it to the air chamber with a Phillips head screwdriver.

According to the dimension of the chimney fixed bolster, ensure the position of the 2 chimneys are aligned



2 People are required to install the chimney hood

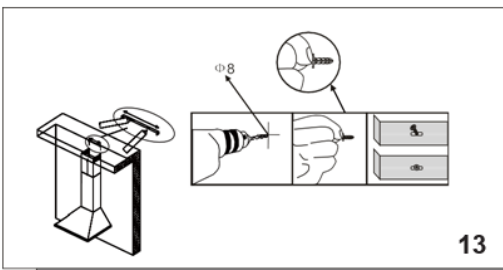


Fig.13
Install the chimney fixed bolster on the corresponding position on the wall.

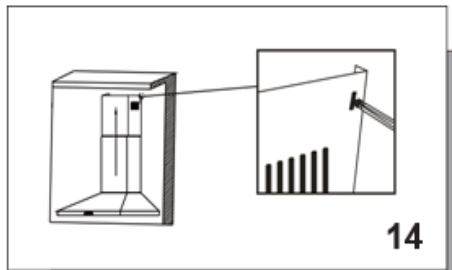


Fig.14
Use the screw ST4 *10 to connect the chimney fixed bolster and the upper chimney

OPERATION

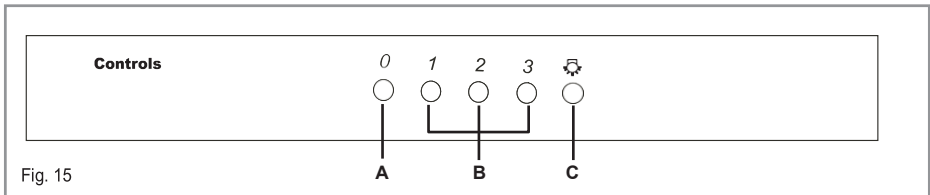
For best performance, switch on the extractor 15 minutes before starting to cook and leave it to run for approximately 15 minutes after the end of cooking.

Control Panel

A – Power off Button

B - Speed level buttons

C - Light button



To switch the extractor light On or Off

- Press button “C”

To switch on the extractor or to change the speed at any time when the extractor is running

- Press the relevant “B” button for the first, second or third speed level as required.

To switch the extractor off

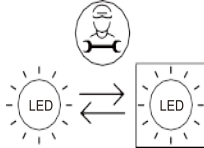
- Press the “A” button.

CLEANING AND MAINTENANCE

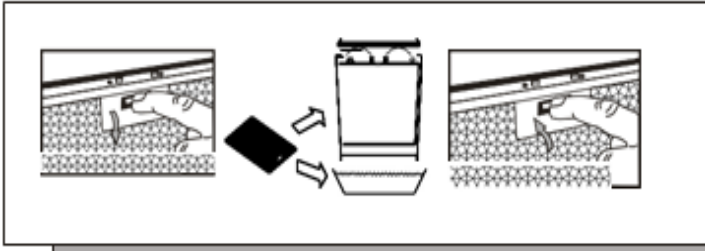
Replacing the lamps

Replacing lamps

The hood is equipped with a lighting system based on LED technology. The LEDs guarantee an optimum lighting with a duration of up to 10 times as the traditional lamps and allows a saving of 90% electrical energy. In case of malfunction of the lamps, contact an approved service agent.



Cleaning of the metallic filters



- Remove the metallic filter from the cooker hood.
 - Wash the filter in a solution of water and neutral liquid detergent, leaving to soak
 - Rinse thoroughly with warm water and leave to dry
 - The metallic filter may also be washed in the dishwasher.
- The metallic filter may discolor after several washes. This is not cause for customer complaint nor replacement of metallic filter.

DISPOSAL



This product must not be disposed with other household waste. To prevent possible harm to the environment or human health from uncontrolled waste disposal, recycle it responsibly to promote the sustainable reuse material resources.

UNIVA WARRANTY

This guarantee is issued by Univa in respect of all products manufactured and sold by Univa. The liability to Univa is limited to the following conditions:

1. This guarantee operates in favour of the original purchaser of new appliances only and cannot be ceded, assigned or transferred. Univa shall have no liability in respect of second hand goods or to second or subsequent purchasers of any appliances.
2. This guarantee shall operate for a period of **Two Years** from the date of original purchase of the appliance which date shall be proved to the reasonable satisfaction of a Univa authorized service Agent or consultant.
3. The liability of Univa shall be limited to the repair or replacement by a Univa authorized service dealer in its sole discretion of the defective parts of the appliance at its sole cost. Univa shall not be liable for any loss or damage suffered by the customer or any other party or caused to the appliance arising from negligent use.
4. Should the defective appliance be situated further than 50 km from the nearest Univa service centre or authorized service agent, Univa shall be entitled to charge its customer a travelling rate for such distance in excess of 50 km.
5. The liability of Univa shall be limited in respect of defective parts or material or in respect of defective workmanship only. Univa authorized service agent shall have no liability if, in its opinion, the defect or fault was caused through faulty installation, accidental damage, incorrect usage, misuse or abuse, failure to follow the operating instructions, fire, flood, civil disturbances or any Act of God. The company shall not be responsible for damages caused by insect and/or animal infestation. Univa shall not be obliged to replace filters, light bulbs, fuses, vitreous enamelware, and any other items which Univa, in its sole discretion, determines that the life of such item depends on the amount of use and care taken in respect of such item.
6. The guarantee shall become void and cease to operate if the appliance is dismantled by or any repairs to the appliance are affected by any persons not duly authorized by Univa, or if any non-genuine Univa parts are used in the appliance, or if the serial number of the appliance is removed.
7. The product has been designed and manufactured for normal domestic use and the warranty will accordingly become void and cease to operate if the product is not used for domestic purposes.
8. If the customer is unable to prove the date of purchase of the appliance to the reasonable satisfaction of the representative of a Univa authorized service agent or if no fault or defects are found in the appliance, a Univa authorized service agent shall be entitled to charge for the work done and travelling expenses incurred.

Details of Head Office

- **Howick Mews, Waterfall Park, Bekker Road, Vorna Valley, Midrand, Gauteng, South Africa**
- **P.O. Box 1482, Halfway House, Gauteng, 1685**
- **Sales and Marketing Tel: +27 11 315 0015**
Email: sales@univa.co.za
- **Service and Spares: Tel: +27 11 315 0015**
Email: support@univa.co.za



www.univa.co.za