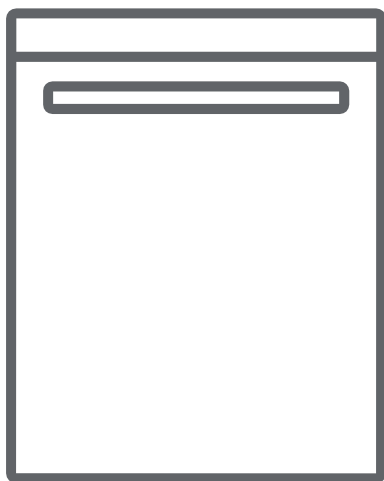




Dishwasher Instruction Manual



UDW301

Introduction

Dear Customer

Thank you for choosing this quality, Univa Dishwasher.






This User Manual contains important safety information and instructions on the operation and maintenance of your appliance.

Please take the time to read this User Manual before using your appliance and keep this book for future reference.

ALL SPECIFICATIONS ARE SUBJECT TO CHANGE WITHOUT PRIOR NOTICE

IMPORTANT!

Keep this Instruction Manual safe for future reference

Icon	Type	Meaning
	WARNING	Serious injury or death risk
	RISK OF ELECTRIC SHOCK	Dangerous voltage risk
	FIRE	Warning; Risk of fire / flammable materials.
	CAUTION	Injury or property damage risk
	IMPORTANT / NOTE	Operating the system correctly

CONTENTS

1. SAFETY INSTRUCTIONS..... 5

2. INSTALLATION8

3. TECHNICAL SPECIFICATIONS.....10

4. BEFORE USING THE APPLIANCE.....11

5. LOADING YOUR DISHWASHER14

6. PROGRAMME TABLE.....18

7. THE CONTROL PANEL 19

8. CLEANING AND MAINTENANCE..... 20

9. TROUBLESHOOTING.....22


10. PRODUCT INFORMATIONS..... 25

11. WARRANTY..... 26


1. SAFETY INSTRUCTIONS


1.1 General Safety Warnings

Read these instructions carefully before using your appliance and keep this manual for future reference.


 Please check the packaging of your machine before installation and the outer surface of the machine once the packaging has been removed. Do not operate the machine if it appears damaged or if the packaging has been opened.

Packaging materials protect your machine from any damage that might occur during transportation. The packaging materials are environmentally friendly as they are recyclable. Use of recycled material reduces raw material consumption and decreases waste production.

 This appliance can be used by children older than 8-years of age and by persons with reduced physical, or mental capabilities or lack of experience and knowledge if they are supervised, or instruction concerning the use of the appliance in a safe way has been demonstrated and they understand the hazards involved. Children should not be allowed to play with the appliance.

 Remove packaging and keep it out of reach of children.


 Keep children away from detergents and rinse aids.


 There may be some residue left in the machine after washing. Keep children away from the machine when it is open.


1.2 Installation Warnings


Choose a suitable and safe place to install the dishwasher



Only original spare parts should be used for the machine

  Unplug the machine before installation.

 Your machine must be installed by an authorized service agent / qualified electrician. Installation done by unqualified personnel will void the warranty.

 Check that the indoor electrical fuse system is connected in line with safety regulations.

 All electrical connections must match the values on the plate at the back of the unit.

  Ensure the machine does not stand on the electrical supply cable.



Never use an extension cord or a multi-plug socket connection.



The plug should be accessible after installation.

After installation, run your machine unloaded for the first time.



The machine must not be plugged in during positioning.



Always use the coated plug supplied with your machine.



If the electrical cable is damaged, it should be replaced by a qualified electrician.

- Connect the hose directly to the water inlet tap. The pressure supplied by the tap should be a minimum of 0.03 MPa and a maximum of 1 MPa. If the pressure exceeds 1 MPa, fit a pressure relief valve.

1.3 During Usage

This machine is for domestic use only; do not use it for other purposes. Commercial use will void the guarantee.



Do not stand, sit, or place loads on the open door of the dishwasher.



Only use detergents and rinse aids produced specifically for dishwashers. Univa is not responsible for any damage that may occur due to misuse.



Do not drink water from the machine.



Due to the danger of explosion, do not place any chemical dissolving agents into the machine's washing section.

- Check heat-resistance of plastic items before washing them in the machine.



Only place dishwasher safe items in the machine and do not overfill the baskets.



Do not open the door while the machine is in operation as hot water may spill out. Safety devices ensure the machine stops if the door is opened.



Close the dishwasher door to avoid personal injury or damage.



Place knives and other sharp objects in the cutlery basket in a blade-down position.



Automatic door-opening system (model specific): when the EnergySave option is active, the door will open at the end of a program. To prevent damage to your dishwasher, do not attempt to close the door for one minute after it has opened. For effective drying, keep the door open for 30 minutes after a program has ended. Do not stand in front of the door after the auto-open signal sounds.



In case of a malfunction, repairs should only be performed by an authorized service company. Repairs/maintenance done by unqualified personnel or service centers will void the warranty.



Disconnected the power from the mains and switch off the water tap before any repair work is performed. Do not pull the cord to unplug the machine.



Operation at a low voltage will cause a decline in performance levels.



For safety, disconnect the plug once a program has finished.



To avoid an electric shock, do not unplug the machine with wet hands.



Pull the plug to disconnect the machine from the mains, never pull on the cord.

RECYCLING

- Some machine components and packaging consist of recyclable materials.
- Plastics are marked with the international abbreviations:(>PE<, >PP<, etc.)
- The cardboard parts consist of recycled paper.
- Material unsuitable for domestic waste must be disposed of at recycling centres/depots.
- Contact a relevant recycling centre to obtain information about disposal of different materials.

PACKAGING AND THE ENVIRONMENT

Packaging materials protect your machine from damage that may occur during transportation. The packaging materials are environmentally friendly as they are recyclable. The use of recycled material reduces raw material consumption and therefore decreases waste production.

Disposal of your old machine



The symbol on the product or on its packaging indicates that this product may not be treated as household waste. Instead, it shall be handed over to the applicable collection point for the recycling of electrical and electronic equipment. By ensuring this product is disposed of correctly, you will help prevent potential negative consequences for the environment and human health, which could otherwise be caused by inappropriate waste handling of this product. For more detailed information about recycling of this product, please contact your local authority, or the shop where the product was purchased.

2. INSTALLATION

2.1. Machine positioning


When positioning the machine, place it in an area where dishes can be easily loaded and unloaded. Do not put the machine in an area where the ambient temperature falls below 0°C.

Read all warnings located on the packaging before removing the packaging and positioning the machine.

Place the machine close to a water tap and drain. Take into consideration that the connections will not be altered once the machine is in position.

Do not hold the machine by its door or panel.

Leave an adequate distance around the machine to allow ease of movement when cleaning.

 Ensure the water inlet and outlet hoses are not squeezed or trapped and that the machine does not stand on the electrical cable while positioning.

Position the machine on a flat area or adjust the feet so the machine is level and balanced. If the machine is not level, the door of the machine will not close properly.

2.2. Water connection

We recommend fitting a filter to your water inlet supply to prevent damage to your machine due to contamination (sand, rust, etc.) from indoor plumbing. This will also help prevent yellowing and deposit formation after washing.

Note printing on the water inlet hose!

If models are marked with 25°, the water temperature may be max. 25 °C (cold water).

For all other models:

Cold water preferred; hot water max. temperature 60 °C.

2.3. Water inlet hose



WARNING: Use the new water inlet hose supplied with your machine, do not use an old machine's hose.



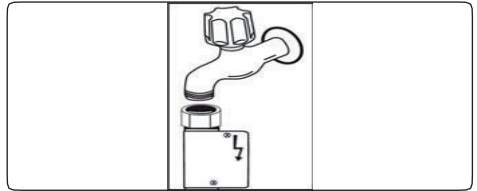
WARNING: Run water through the new hose before connecting.



WARNING: Connect the hose directly to the water inlet tap. The pressure supplied by the tap should be a minimum of 0.03 MPa and a maximum of 1 MPa. If the pressure exceeds 1 MPa, a pressure relief valve must be fitted between the connection.

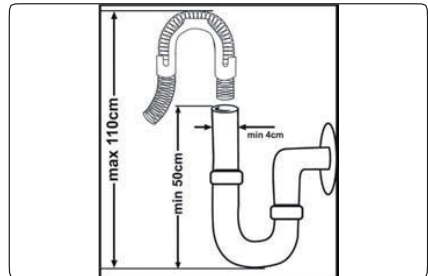


WARNING: After the connections are made, turn the tap on fully and check for water leaks. Always turn off the water inlet tap after a wash program has finished.



An Aqua-stop water spout is available with some models. Do not damage it or allow it to become kinked or twisted.

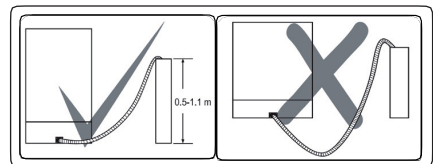
2.4. Drain Hose



Connect the water drain hose directly to water drain hole or to the sink outlet spigot. This connection should be minimum 50cm and maximum 110cm from floor plane.



IMPORTANT: Items will not wash properly if a drain hose longer than 4m is used.



2.5. Electrical connection

! WARNING: Your machine is set to operate at 220-240V. If the mains voltage supply to your machine is 110V, connect a transformer of 110/220V and 3000W between the electrical connections.

! ! Connect the product to a grounded outlet protected by a fuse complying with the values in the Technical Specifications "table".

! ! The earthed plug of the machine must be connected to an earthed outlet supplied by suitable voltage and current.

! ! In the absence of earthing installation, an authorized electrician should carry out an earthing installation. If operated without earthing installed, Univa will not be responsible for any loss of use that may occur.

! ! The plug on this appliance may incorporate a 13A fuse (country specific)

2.6. Fitting the machine undercounter

If the machine is fit undercounter, sufficient space is needed, and the wiring-plumbing must be suitable to do so (1). If the space under the countertop is suitable for fitting the machine, remove the worktop as shown in illustration (2).

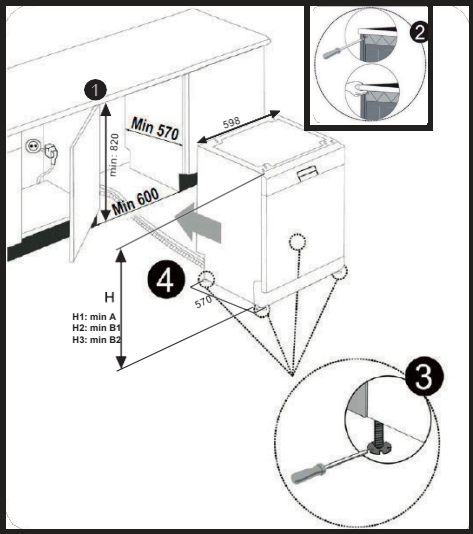
! WARNING: The countertop, which the machine will be placed under, must be stable to prevent imbalance.

The top panel of the dishwasher must be removed to fit the machine under the countertop.

To remove the top panel, remove the screws that hold it on, located at the rear of the machine. Push the panel 1cm from the front towards the rear and lift it. Adjust the machine feet according to the slope of the floor (3).

Fit the machine taking care not to crush or bend the hoses (4).

! WARNING: After removing the top panel of the dishwasher, the machine should be placed in a space of the dimensions shown in the figure below.



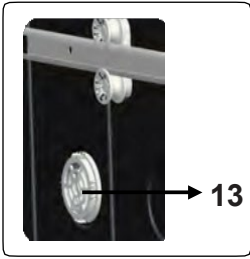
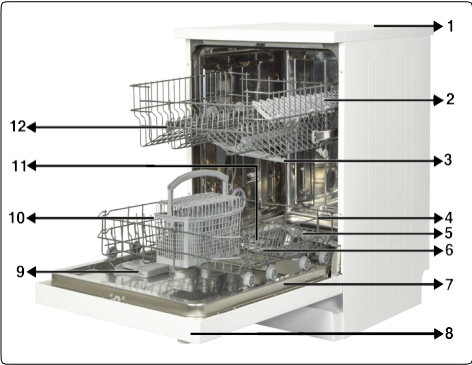
	A	B	
	All Products	B ₁	B ₂
Product's Height (±2 mm)	820 mm	830 mm	835 mm

A: If no felt on the top of the product; take into account the product's height.

B1: If there is felt on top of the product with 2nd basket; take the product's height into account.

B2: If there is felt on top of the product with 3rd basket; take the product's height into account.

3. TECHNICAL SPECIFICATIONS



3.1. General appearance

- 1. Worktop
- 2. Upper basket with
- 3. Upper spray arm
- 4. Lower basket
- 5. Lower spray arm
- 6. Filters
- 7. Rating plate
- 8. Control panel
- 9. Detergent and rinse-aid dispenser
- 10. Cutlery basket
- 11. Salt dispenser
- 12. Upper basket track latch
- 13. Mini Drying Unit: This system enhances the drying performance of your dishes.

3.2. Technical specifications

Capacity	13 place settings
Dimensions (mm)	
Height	850(mm)
Width	598(mm)
Depth	598(mm)
Net weight	40,30 kg
Operating voltage / frequency	220-240V 50 Hz,
Total current (A)	10(A)
Total power (W)	1900(W)
Water supply pressure	Maximum: 1 (Mpa) Minimum: 0.03 (Mpa)

4. BEFORE USING THE APPLIANCE

4.1. Preparing your dishwasher for first use

- Make sure the electricity and supply water specifications match the values indicated in the installation instructions for the machine.
- Remove all packaging material inside the machine.
- Set the water softener level.
- Fill the rinse aid compartment.

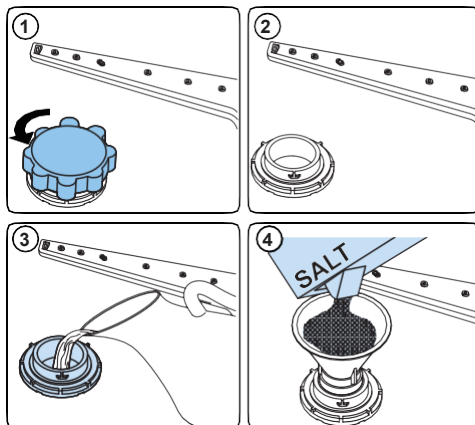
4.2 Salt usage (IF AVAILABLE)

For a good washing function, the dishwasher needs soft, i.e. less calcareous water. Otherwise, white lime residue will remain on the dishes and the interior equipment. This will negatively affect your machine's washing, drying, and shining performance. When water flows through the softener system, the ions forming the hardness are removed from the water and the water reaches the softness required to obtain the best washing result. Depending on the level of hardness of the inflowing water, these ions that harden the water accumulate rapidly inside the softener system. Therefore, the softener system must be refreshed so that it operates with the same performance during the next wash. For this purpose, dishwasher salt is used.

Only use special dishwasher salt to soften the water. Do not use any small grained or powdered type of salts which can easily soluble. Using any other type of salt can damage the machine.

4.3. Fill the salt (IF AVAILABLE)

To add softener salt, open the salt compartment cap by turning it counterclockwise **(1&2)** At first use, fill the compartment with 1kg salt and water **(3)** until it is almost overflowing. If available, using a funnel **(4)** will make filling easier. Replace the cap and close it. After every 20-30 Cycles, add salt to the machine until it is filled (approx. 1kg).




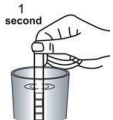
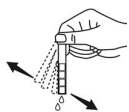
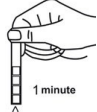
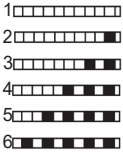
Only add water to the salt compartment on first use.

Use softener salt specifically produced for use in dishwashers.

When you start your dishwasher, the salt compartment is filled with water, therefore put the softener salt in prior to starting your machine.

If the softener salt has overflowed and you do not start the machine immediately, run a short washing program to protect your machine against corrosion.

4.4. Test Strip

Run water through tap (1min.)	Keep the strip in water (1sec)	Shake the strip.	Wait (1min.)	Set the hardness level of your machine.
				

NOTE: Level is set to 3 as default. If the water is well water or has a hardness level above 90dF, it is recommended that a filter and refinement device are used.

4.5. Water Hardness Table

Level	German dH	French dF	British dE	Indicator
1	0-5	0-9	0-6	Wash LED is on.
2	6-11	10-20	7-14	Rinse LED is on.
3	12-17	21-30	15-21	Dry LED is on.
4	18-22	31-40	22-28	End LED is on.
5	23-31	41-55	29-39	Wash and End LEDs are on.
6	32-50	56-90	40-63	Rinse and End LEDs are on.

4.6. Water Softener System

The dishwasher is equipped with a water softener which reduces the hardness in the mains water supply. To find out the hardness level of your tap water, contact your water company or use the test strip (if available).

4.7. Setting

- Turn the knob to the “0/Reset” position.
- Push the “Start/Pause” button and hold down.
- Turn on the machine.
- Hold down the “Start/Pause” button until the lights flash and “SL” disappears.
- The machine will display the last setting.
- Set the level by pushing the “Start/Pause” button.
- Switch off the machine to save the setting.

4.8. Detergent usage

Only use detergents specifically designed for domestic dishwashers.

Add the recommended amount of detergent for the selected program to ensure the best performance.

Keep your detergents in cool, dry places out of reach of children.

See the detergent manufacturer’s instructions for further information.

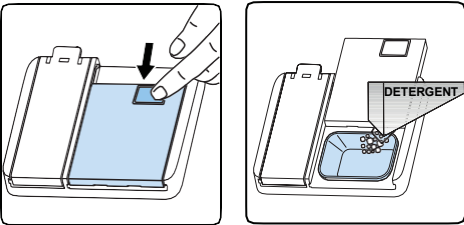
Continued use of too much detergent may cause machine damage.

Using little detergent can result in poor cleaning and you can see whitish streaks in hard water. See the detergent manufacturer's instructions for further information.

4.9. Filling the detergent

Push the latch to open the dispenser and pour in the detergent.

Close the lid and press it until it locks in place. The dispenser should be refilled just before the start of each program. If the dishes are heavily soiled, place additional detergent in the pre-wash detergent chamber.



4.10. Using combined detergents

These products should be used according to the manufacturer's instructions.

Never put combined detergents into the interior section or the cutlery basket.

Combined detergents contain not only the detergent but also rinse-aid, salt replacement substances and additional components depending on the combination.

We recommend you do not use combined detergents in short programs. Please use powder detergents in such programs.

If you encounter problems when using combined detergents, please contact the detergent manufacturer.

When you stop using combined detergents, make sure that water hardness and rinse aid settings are set to the correct level.

4.11. Rinse-aid usage

The rinse aid helps to dry the dishes without streaks and stains. Rinse-aid is required for stain-free utensils and clear glasses. The rinse aid is automatically released during the hot rinse phase. If rinse aid dosage setting set too low, whitish stains remains on dishes and dishes do not dry and wash clean. If rinse aid dosage setting

set too high, you can see blueish layers on glass and dishes.

4.12. Filling the rinse-aid and setting

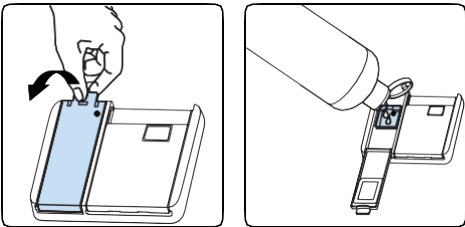
To fill the rinse aid compartment, open the rinse-aid compartment cap. Fill the compartment with rinse aid to the MAX level and then close the cap. Be careful not to overfill the rinse aid compartment and wipe up any spills.

To change the rinse aid level, follow the below steps before turning on the machine:

- Turn the knob to the “off” position.
- Push the “Start/Pause” button and hold it down.
- Turn the knob counter clockwise one step.
- Hold down the “Start/Pause” button until the LEDs flash twice.
- The machine will display the current setting.
- Set the level by pushing the “Start/ Pause” button.
- Turn the knob to the “off” position to save the setting.

The factory setting is “4”.

If the dishes are not drying properly or are spotted, increase the level. If blue stains form on your dishes, decrease the level.



Level	Brightener Dose	Indicator
1	Rinse-aid not dispensed	Wash LED is on.
2	1 dose is dispensed	End LED is on.
3	2 doses are dispensed	Start/Pause LED is on.
4	3 doses are dispensed	Wash and End LEDs are on.
5	4 doses are dispensed	Wash and Start/ Pause LEDs are on.

5. LOADING YOUR DISHWASHER

For best results, follow these loading guidelines.


Loading the household dishwasher up to the capacity indicated by the manufacturer will contribute to energy and water savings.


Manual, pre-rinsing of tableware items leads to increased water and energy consumption and is not recommended. Place cups, glasses, stemware, small plates, bowls, etc. in upper basket. Do not lean long glasses against one another as it might not remain steady and damage. When placing long stem glasses and goblets, lean them against the basket edge or rack and not against other items.

Place all containers such as cups, glasses, and pots into the dishwasher with the opening facing downwards otherwise water can collect in items.

If there is a cutlery basket in machine, it is recommended to use the cutlery grid to obtain the best result. Place all large- (pots, pans, lids, plates, bowls etc.) and very dirty items in the lower rack.


Dishes and cutlery should not be placed on top of each other.


 **WARNING:** Take care not to obstruct the rotation of spray arms.

 **WARNING:** Load the dishes in such a way that it will not prevent the opening of the detergent dispenser.

5.1. Recommendations

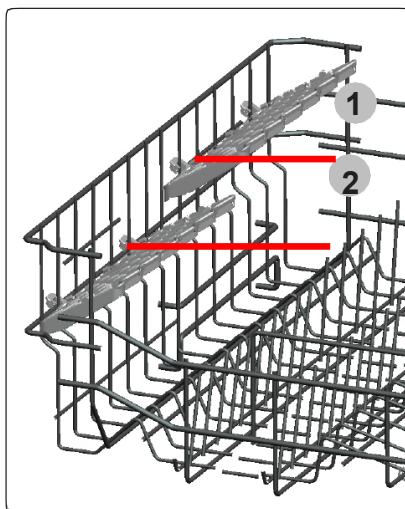
Remove any coarse residue on dishes before placing the dishes in the machine. Start the machine with full load.

 Do not overload the drawers or place dishes in the wrong basket.

 **WARNING:** To avoid any possible injuries, place long-handle and sharp-pointed knives with their sharp points facing down or horizontally on the baskets.

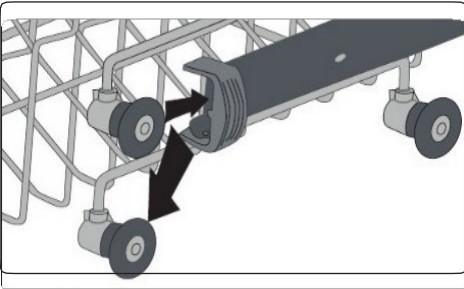
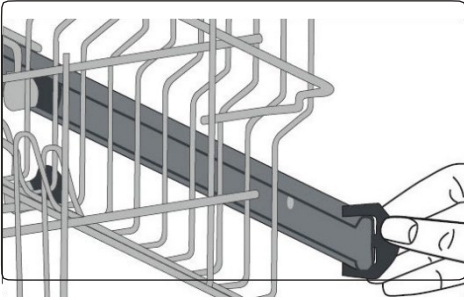
Height Adjustable Rack (peg type)

The height adjustable racks enable glasses and cups to be placed on or under the racks. The racks can be adjusted to 2 different heights. Cutlery and utensils can also be placed on the racks horizontally.



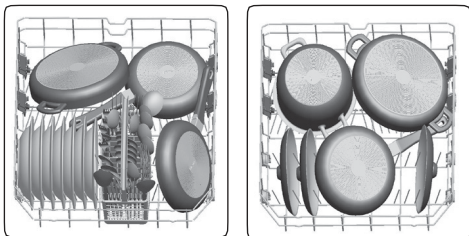
Upper Basket Height adjustment

Turn the Rail Stop Clips, at the ends of the rails, to the sides to open them (as shown in the image below), then pull out and remove the basket. Change the position of the wheels, then reinstall the basket to the rail, making sure to close the Rail Stop Clips. When the upper basket is in the higher position, large items such as pans can be placed on the lower basket.

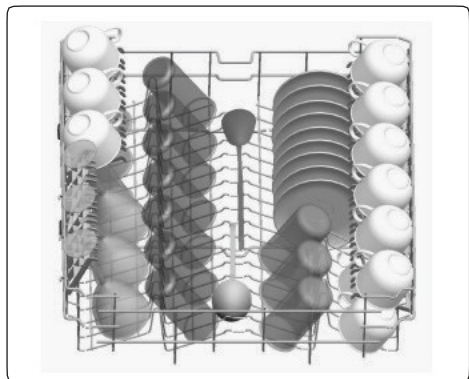


5.2. Alternative basket loads

Lower basket

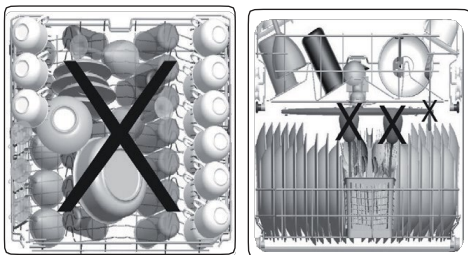


Upper basket



Incorrect Loads

Incorrect loading can cause poor washing and drying performance. Please follow the manufacturer's recommendations for good performance results.



Unsuitable items for dishwashing

- Cigarette ashes, candle leftovers, polish, paint, chemical substances, iron-alloy materials.
- Forks, spoons, and knives with wooden, bone, ivory or nacre coated handles; glued items, items soiled with abrasive, acidic, or base chemicals.
- Temperature-sensitive plastics, copper or tin coated containers.
- Aluminium and silver objects.
- Some delicate glasses, ornamental printed porcelains; some crystal items, adhered cutlery, lead crystal glasses, cutting boards, synthetic fibred items.
- Absorbent items such as sponges or kitchen rugs.



IMPORTANT: In future, purchase dishwasher-proof kitchenware.

6. PROGRAMME TABLE

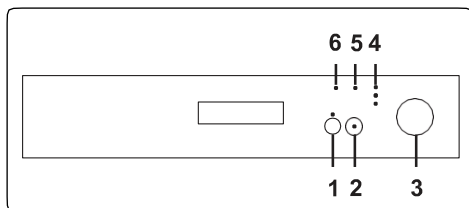
Programme	Duration (min)	Description
Quick	30	Quick wash program for lightly soiled dishes.
Eco (Reference)	205	Standard program for dishes which are used daily but are not heavily soiled.
Super 50'	50	A faster program for dishes which are used daily but are not heavily soiled.
Intensive	117	For heavily soiled dishes.
Hygiene	127	For heavily soiled dishes which require hygienic washing.



NOTE: PROGRAMME DURATION MAY CHANGE ACCORDING TO THE AMOUNT OF DISHES, TAP WATER, AMBIENT TEMPERATURE AND SELECTED ADDITIONAL FUNCTIONS.

- Only use powder detergent in short programs
- Short programs do not include a drying step.
- To assist drying, we recommend partially opening the door after the program has finished.

7. THE CONTROL PANEL



Rotate the Program Selection Knob (3) to switch the machine on and select suitable program for your dishes. When the knob is in the 'Off' position, the machine will not operate.

Press the Start/Pause button (2) to start the selected program. The Start/Pause light will switch off and the Wash light will illuminate. If the door of your machine is opened while a program is in operation, the Start/Pause light will flash.



NOTE: Press and hold the Delay button (1) for 3 seconds to activate the Half Load function, which shortens the duration of a program. Press and hold the button again for 3 seconds to cancel it.



NOTE: If an extra feature is used, such as the Delay or Half Load, (1) on the most recent wash program, this feature will remain active on the next selected program. To cancel this feature on the newly selected wash program, turn the Program Selection Knob to the 'Off' position, then turn the machine on. Extra features can be activated with the newly selected program.

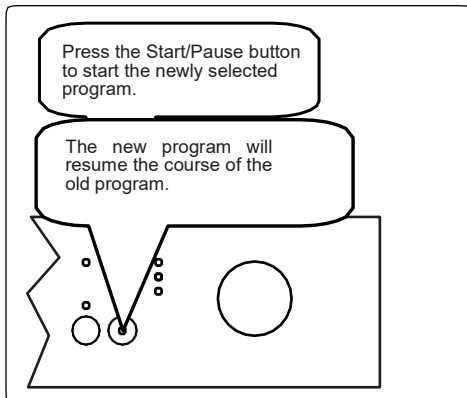
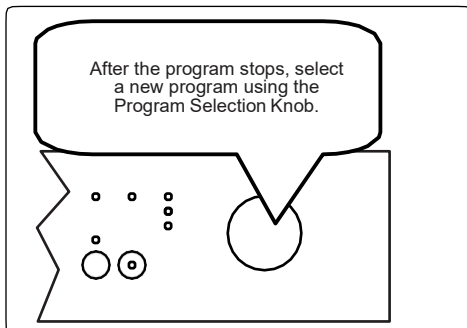
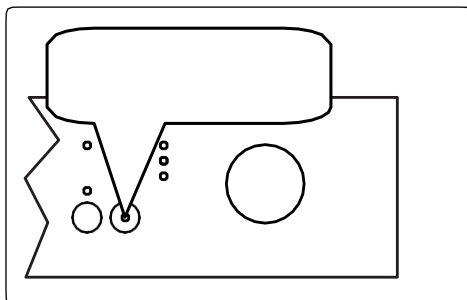
Delaying the Program

Press the Delay button to delay the start time of a program for 3, 6 or 9 hours. Pressing the button once will delay the start time for 3 hours, pressing twice will delay for 6 hours, and pressing a third time will delay the start time for 9 hours. If the button is pressed for a fourth time, there will be no delay. Press the Start/Pause button to activate the delay. The program can be selected first and the delay time after, or vice versa. To cancel or change the delay time, press the Start/Pause button first, then select a new delay time. The delay time can be cancelled by turning the Program

Selection knob to the 'Off' position. During a delay, the light corresponding to the remaining time, is switched on.

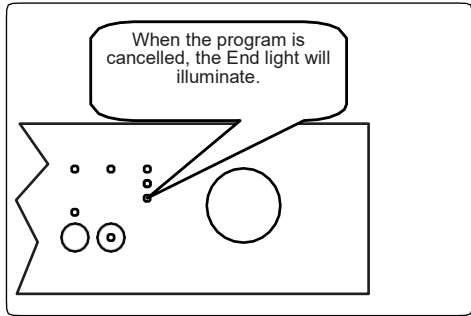
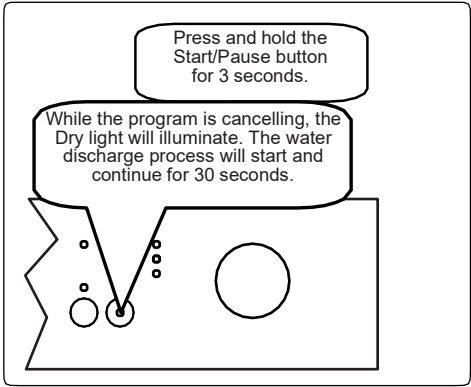
7.1. Changing a Program

Follow the steps below to change a program while in operation.

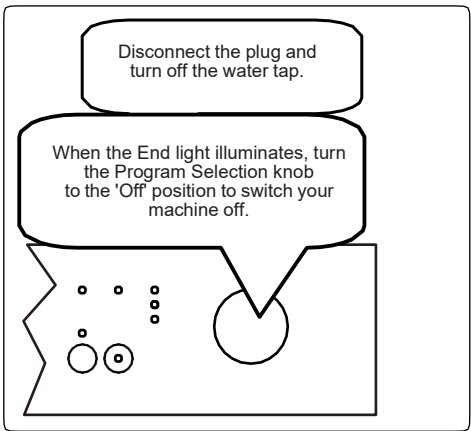



7.2. Cancelling a Program


Follow the steps below to cancel a program while in operation.





7.3. Switching the Machine Off



 **NOTE:** Do not open the door before the program is complete.

 **NOTE:** Leave the door slightly open at the end of a wash program to speed up the drying process.

 **NOTE:** If the door of the machine is opened, or the power is cut off during a wash program, the program will continue when the door is closed or when the power returns.

 **NOTE:** If the power is interrupted, or if the machine door is opened during the drying process, the program will terminate, and your machine will now be ready for a new program selection.

8. CLEANING AND MAINTENANCE

Cleaning your dishwasher is important to maintain the machine's service life. Ensure the water softening setting (If available) is done correctly and the correct amount of detergent is used to prevent limescale accumulation. Refill the salt compartment when the salt sensor light comes on.

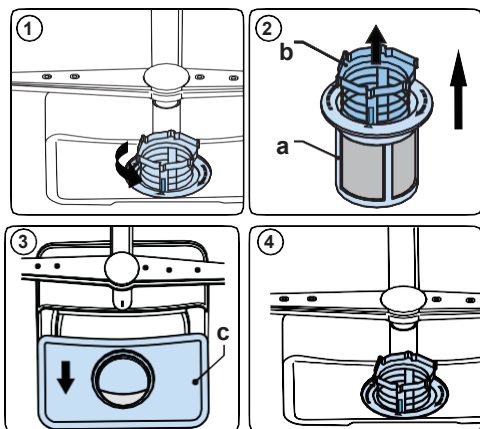
Oil and limescale may build up in your Dishwasher over time. If this occurs:

- Fill the detergent compartment but do not load any dishes. Select a program which runs at high temperature and run the Dishwasher empty. If this does not clean your Dishwasher sufficiently, use a cleaning agent designed for dishwasher use.
- To extend the life of your dishwasher, clean the appliance regularly.
- Wipe the door seals regularly with a damp cloth to remove any accumulated residue or foreign objects.

8.1. Filters

Clean the filters and spray arms at least once a week. If there are any food waste remains, or foreign objects on thecoarse and fine filters, remove them and clean the filters thoroughly with water.

- a) Micro Filter b) Coarse Filter**
c) Metal Filter

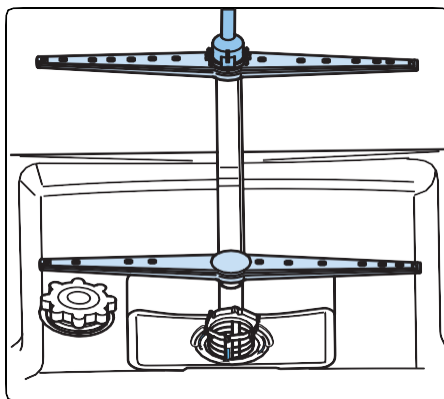


To remove and clean the filter combination, turn it counterclockwise and remove it by lifting it upwards **(1)**. Pull the coarse filter out of the micro filter **(2)**. Then pull and remove the metal filter **(3)**. Rinse the filter with lots of water until it is free of residue. Reassemble the filters. Replace the filter insert, and rotate it clockwise **(4)**.

- Never use your dishwasher without a filter.
- Incorrect fitting of the filter will reduce the washing effectiveness.
- Clean filters are necessary for proper running of the machine.

8.2. Spray arms

Make sure that the spray holes are not clogged and that no food waste or foreign object is stuck to the spray arms. If there is any clogging, remove the spray arms and clean them under running water. To remove the upper spray arm, undo the nut holding it in position by turning it clockwise and pulling it downwards. Make sure that the nut is properly tightened when refitting the upper spray arm.



8.3 Drain Pump

Large food residues or foreign objects which were not captured by the filters may block the waste water pump. The rinsing water will then be above the filter.

Warning Risk of cuts!

When cleaning the waste water pump, ensure that you do not injure yourself on pieces of broken glass or pointed implements.

In this case:












1. First always disconnect the appliance from the power supply.
2. Take out baskets.
3. Remove the filters.
4. Scoop out water, use a sponge if required.
5. Check the area and remove any foreign objects.
6. Install filters.
7. Re-insert baskets.

9. TROUBLE SHOOTING

FAULT	POSSIBLE CAUSE	TROUBLESHOOTING
Whitish stains remain on dishes.	Not enough detergent used.	Use the correct amount of detergent, as instructed in the program table.
	Rinse aid dosage and/or water softener setting set too low.	Increase rinse aid and/or water softener level.
	High water hardness level.	Increase water softener level and add salt.
	Salt compartment cap not closed properly.	Check that the salt compartment cap is closed properly.
Dishes do not dry.	Drying option is not selected.	Select a program with a drying option.
	Rinse aid dosage set too low.	Increase rinse aid dosage setting.
Rust stains form on the dishes.	Stainless-steel quality of the dishes is insufficient.	Use only dishwasher-proof sets.
	High level of salt in wash water.	Adjust the water hardness level using water hardness table.
	Salt compartment cap not closed properly.	Check that the salt compartment cap is closed properly.
	Too much salt spilled in the Dishwasher while filling it with salt.	Use funnel while filling salt to the compartment to avoid spillage.
	A poor mains grounding.	Consult a qualified electrician immediately.
Detergent remains in the detergent compartment.	Detergent was added when the detergent compartment was wet.	Make sure detergent compartment is dry before use.

FAULT	POSSIBLE CAUSE	TROUBLESHOOTING
The program doesnot start.	Your Dishwasher is not plugged in.	Plug your Dishwasher in.
	Your Dishwasher is not switched on.	Switch your Dishwasher on by pressing the On/Off button.
	Fuse blown.	Check your indoor fuses.
	Water inlet tap is closed.	Turn on the water inlet tap.
	Your Dishwasher door is open.	Close the Dishwasher door.
	Water inlet hose and machine filters are clogged.	Check the water inlet hose and machine filters and make sure they are not clogged.
Water remains inside the machine.	Water drain hose is clogged or twisted.	Check the drain hose, then either clean or untwist it.
	The filters are clogged.	Clean the filters.
	The program is not finished yet.	Wait until the program is finished.
Machine stops during washing.	Power failure.	Check mains power.
	Water inlet failure.	Check water tap.
Shaking and hitting noises are heard during a wash operation.	The spray arm is hitting the dishes in the lower basket.	Move or remove items blocking the spray arm.
Partial food wastes remain on the dishes.	Dishes placed incorrectly, sprayed water not reaching affected dishes.	Do not overload baskets.
	Dishes leaning against each another.	Place dishes as instructed in the section on loading your dishwasher.
	Not enough detergent used.	Use the correct amount of detergent, as instructed in the program table.
	Wrong wash program selected.	Use the information in the program tableto select the most appropriate program.
	Spray arms clogged with food waste.	Clean the holes in the spray arms with thin objects.
	Filters or water drain pump clogged or filter misplaced.	Check the drain hose and filters are correctly fitted.

AUTOMATIC FAULT WARNINGS AND WHAT TO DO

TROUBLE CODE			POSSIBLE FAULT	WHAT TO DO
Wash	End	Start/ Pause		
			Insufficient water	Make sure the water inlet tap is open and water is flowing.
				Separate the inlet hose from the tap and clean the filter of the hose.
				Contact for service if the error continues.
			Continuous water input	Close the tap and contact for service.
			Inability to discharge water	Water discharge hose and filters may be clogged.
				Cancel the program.
				If the error continues, contact for service.
				Contact for service.
			Faulty heater and heater sensor	Contact for service.
			Overflow	Unplug the machine and close the tap.
				Contact for service.
			Faulty electronic card	Contact for service.

10. PRODUCT INFORMATION SHEET

UDW301

Supplier's trade mark	UNIVA
Supplier's model	UDW301
Capacity of dishwasher	13
The energy efficiency class	A++
Annual energy consumption in kWh per year (AEc) (280 Cycle)*	261
Energy consumption (Et) (kWh per cycle)	0,910
Off-mode power consumption (W) (Po)	0,50
Left-on mode power consumption (W) (Pi)	1,00
Annual water consumption in litres per year (AWc) (280 Cycle)**	3360
Drying efficiency class***	A
Standard program name****	Eco
Program time for standard cycle (min)	205
Duration of the left-on mode (T _l) (min)	-
Airborne acoustical noise emissions (dB(A) re 1 pW)	52
Freestanding/Built-in	Freestanding

*Energy consumption **261**kwh per year, based on 280 standard cleaning cycles using cold water fill and the consumption of low power modes. Actual energy consumption will depend on how the appliance is used.

** Water consumption **3360** litres per year based on 280 standard cleaning cycles. Actual water consumption will depend on how appliance is used.

*** Drying efficiency class **A** on a scale from G (least efficient) to A (most efficient).

**** The “**Eco**” is the standard cleaning cycle to which the information in the label and the fiche relates. This program is suitable to clean normally soiled tableware and it is the most efficient program in terms of combined energy and water consumption.

52346903 R60

11. UNIVA WARRANTY

This guarantee is issued by Univa in respect of all products manufactured and sold by Univa. The liability to Univa is limited to the following conditions:

1. This guarantee operates in favour of the original purchaser of new appliances only and cannot be ceded, assigned or transferred. Univa shall have no liability in respect of second hand goods or to second or subsequent purchasers of any appliances.
2. This guarantee shall operate for a period of **Two Years** from the date of original purchase of the appliance which date shall be proved to the reasonable satisfaction of a Univa authorized service Agent or consultant.
3. The liability of Univa shall be limited to the repair or replacement by a Univa authorized service dealer in its sole discretion of the defective parts of the appliance at its sole cost. Univa shall not be liable for any loss or damage suffered by the customer or any other party or caused to the appliance arising from negligent use.
4. Should the defective appliance be situated further than 50 km from the nearest Univa service centre or authorized service agent, Univa shall be entitled to charge its customer a travelling rate for such distance in excess of 50 km.
5. The liability of Univa shall be limited in respect of defective parts or material or in respect of defective workmanship only. Univa authorized service agent shall have no liability if, in its opinion, the defect or fault was caused through faulty installation, accidental damage, incorrect usage, misuse or abuse, failure to follow the operating instructions, fire, flood, civil disturbances or any Act of God. The company shall not be responsible for damages caused by insect and/or animal infestation. Univa shall not be obliged to replace filters, fuses, vitreous enamelware, and any other items which Univa, in its sole discretion, determines that the life of such item depends on the amount of use and care taken in respect of such item.
6. The guarantee shall become void and cease to operate if the appliance is dismantled by or any repairs to the appliance are affected by any persons not duly authorized by Univa, or if any non-genuine Univa parts are used in the appliance, or if the serial number of the appliance is removed.
7. The product has been designed and manufactured for normal domestic use and the warranty will accordingly become void and cease to operate if the product is not used for domestic purposes.
8. If the customer is unable to prove the date of purchase of the appliance to the reasonable satisfaction of the representative of a Univa authorized service agent or if no fault or defects are found in the appliance, a Univa authorized service agent shall be entitled to charge for the work done and travelling expenses incurred.

Details of Head Office

- Howick Mews, Waterfall Park, Bekker Road, Vorna Valley, Midrand, Gauteng, South Africa
- P.O. Box 1482, Halfway House, Gauteng, 1685
- Sales and Marketing Tel: +27 11 315 0015

Email: sales@univa.co.za

- Service and Spares: Tel: +27 11 315 0015

Email: support@univa.co.za



www.univa.co.za